



深圳市盈华物联网科技有限公司

Shenzhen Yinghua IoT Technology Co.,Ltd



Shenzhen Yinghua IoT Technology Co., Ltd. was established in 2011. It is a high-tech enterprise dedicated to industrial Internet of Things, communication access, and system integration as the leading business, integrating R&D, production and sales services.

The company has a scientific research team, and has designed R&D centers in Shenzhen and Guangxi respectively.

Quality is the basis for the survival of an enterprise, and innovation is the driving force for enterprise development. The company continuously absorbs the international advanced communication equipment manufacturing technology and experience, timely updates and improves the professional level of products, and adheres to international standards.

Founded

2011

We designed 3G Modem and Router to replace of GPRS terminals on this year.

100,000

2013

The number of terminals sold reached 100,000 units on August 15th, 2013.

1st Branch

2015

To better server customers, also to enlarge the Europe market, we set the first branch "Meizo" in the UK.

1,000,000

2020

The number of terminals sold reached 1,000,000 units on October 20th, 2020.

EDGE Gateway

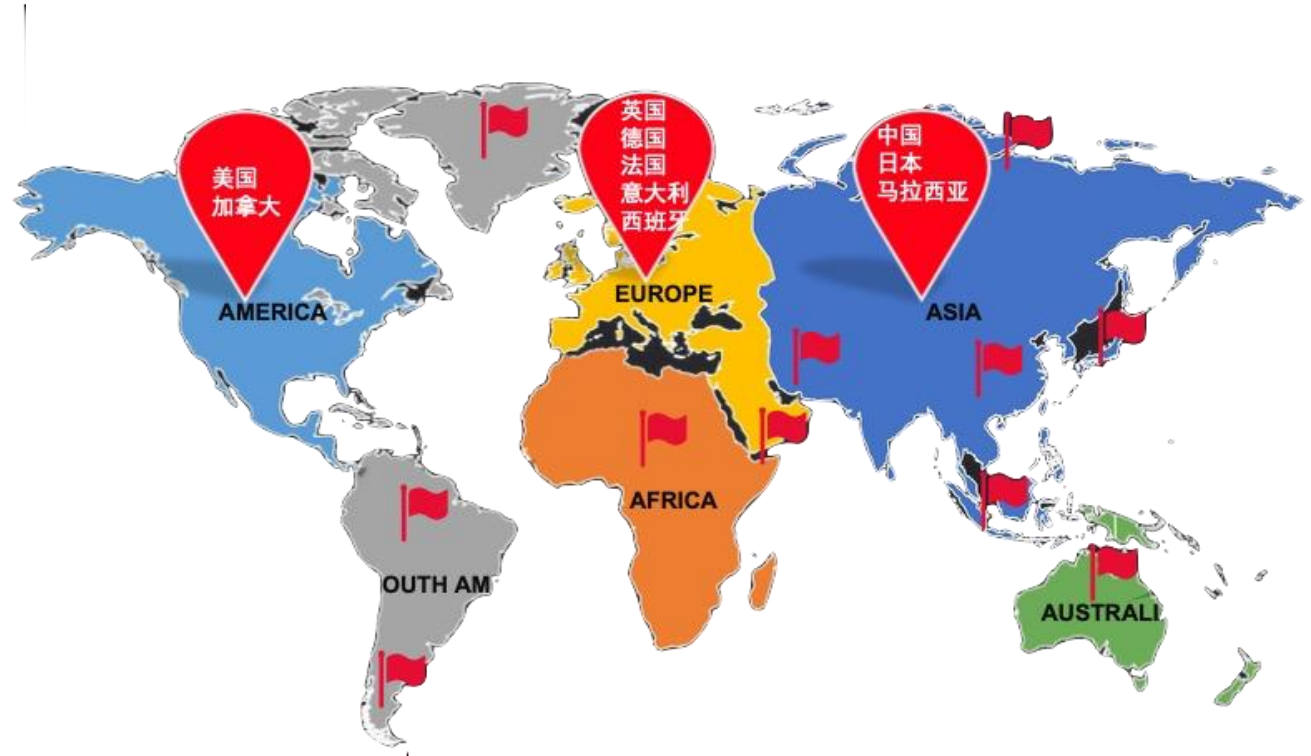
2021

The IoT Gateway with the functions of data collection, processing, logic control and transmission on the edge side of the industrial site is born.



Achievement

Focus On IoT Communications



12 Years
1,000,000+ Terminals
Works in 60 Countries

Customers

Focus On IoT Communications





Hardware

Mobile	4G/LTE (Cat 4), 3G, 2G
CPU	Mediatek MIPS 24Kc 580 MHz
Power	2pin power socket, 9-36 VDC
SIM	1 x External SIM holder (2FF)
Antenna connectors	2 x SMA for mobile, 2 x SMA for WiFi
Ethernet	2 x 10/100 Ethernet ports: 1 x WAN (configurable as LAN), 1 x LAN
Serial	RS232/RS485, DI/DO
Status LEDs	1 x Connection, 3 x Signal strength, 2 x Ethernet, 1 x Power, 1 x SIM, 1 x VPN, 1 x System
Operating temperature	-40 °C to 75 °C
Housing	Metal housing, DIN rail mounting option
Dimensions (W x H x D)	97 x 112 x 24 mm
Weight	280g (without accessories)

Software

Operating system	OpenWRT
Mobile features	Auto APN, Band lock
Protocols	TCP, UDP, IPv4, IPv6, ICMP, NTP, DNS, HTTP, HTTPS, FTP, SMTP, SSLv3, TLS 1.3, ARP, PPP, PPPoE, DHCP, Telnet
Network	Failover (Network backup), VLAN, QoS, Load Balancing
VPN and tunneling	OpenVPN, IPsec, GRE, PPTP, L2TP
Connection monitoring	Ping Reboot, Periodic Reboot, LCP and ICMP for link inspection
Management	Web, Cloud

Model: YHR26

Hardware

Mobile	4G/LTE (Cat 4), 3G, 2G
CPU	Broadcom 600 MHz
Power	9-36 VDC
SIM	1 x External SIM holder (2FF)
Antenna connectors	2 x SMA for mobile, 1 x SMA for WiFi
Ethernet	5 x 10/100 Ethernet ports: 1 x WAN (configurable as LAN), 4 x LAN
Serial	RS232/RS485
Status LEDs	1 x Connection, 3 x Signal strength, 5 x Ethernet, 1 x Power, 1 x WiFi, 1 x VPN, 1 x System
Operating temperature	-40 °C to 75 °C
Housing	Metal housing
Dimensions (W x H x D)	200 x 117.5 x 32.7 mm
Weight	380g (without accessories)

Software

Operating system	Linux
Mobile features	Auto APN, Band lock
Protocols	TCP, UDP, IPv4, IPv6, ICMP, NTP, DNS, HTTP, HTTPS, FTP, SMTP, SSLv3, TLS 1.3, ARP, PPP, PPPoE, DHCP, Telnet
Network	Failover (Network backup), VLAN, QoS, Load Balancing
VPN and tunneling	OpenVPN, IPsec, GRE, PPTP, L2TP
Connection monitoring	Ping Reboot, Periodic Reboot, LCP and ICMP for link inspection
Management	Web, Cloud



Model: YHR58



Hardware

Mobile	4G/LTE (Cat 4), 3G, 2G
CPU	Broadcom 600 MHz
Power	9-36 VDC
SIM	2 x External SIM holder (2FF)
Antenna connectors	2 x SMA for mobile, 1 x SMA for WiFi
Ethernet	5 x 10/100 Ethernet ports: 1 x WAN (configurable as LAN), 4 x LAN
Serial	RS232/RS485
Status LEDs	1 x Connection, 3 x Signal strength, 5 x Ethernet, 1 x Power, 1 x WiFi, 1 x VPN, 1 x System
Operating temperature	-40 °C to 75 °C
Housing	Metal housing
Dimensions (W x H x D)	200 x 117.5 x 32.7 mm
Weight	380g (without accessories)

Software

Operating system	Linux
Mobile features	Auto APN, Band lock
Protocols	TCP, UDP, IPv4, IPv6, ICMP, NTP, DNS, HTTP, HTTPS, FTP, SMTP, SSLv3, TLS 1.3, ARP, PPP, PPPoE, DHCP, Telnet
Network	Failover (Network backup), VLAN, QoS, Load Balancing
VPN and tunneling	OpenVPN, IPsec, GRE, PPTP, L2TP
Connection monitoring	Ping Reboot, Periodic Reboot, LCP and ICMP for link inspection
Management	Web, Cloud



Model: YHR88

Hardware

Mobile	5G NSA/SA operation, Sub-6 GHz, mmWave, 4G LTE, 3G WCDMA
CPU	IPQ4019, ARM Cortex A7 Quad Core
Power	12-36 VDC, 4-pin with 3.5 mm terminal block
SIM	1 x External SIM holder (2FF)
Antenna connectors	4 x SMA for mobile, 2 x SMA for WiFi
Ethernet	4 x 100/1000 Ethernet ports: 1 x WAN (configurable as LAN), 3 x LAN
Serial	RS232/RS485,3-pin with 3.5 mm terminal block
Status LEDs	1 x Connection, 4 x Ethernet, 1 x Power x System
Operating temperature	-40 °C to 75 °C
Housing	Metal housing, DIN rail mounting option
Dimensions (W x H x D)	182*103*30 mm
Weight	480g (without accessories)

Software

Operating system	Linux
Mobile features	Auto APN, Band lock
Protocols	TCP, UDP, IPv4, IPv6, ICMP, NTP, DNS, HTTP, HTTPS, FTP, SMTP, SSLv3, TLS 1.3, ARP, PPP, PPPoE, DHCP, Telnet
Network	Failover (Network backup), VLAN, QoS, Load Balancing
VPN and tunneling	OpenVPN, IPsec, GRE, PPTP, L2TP
Connection monitoring	Ping Reboot, Periodic Reboot, LCP and ICMP for link inspection
Management	Web, Cloud



Model: YHS2106

Hardware

MTU	16K bytes
MAC table	4K
Power	12-36V DC, 44-56V DC (POE type). Dual redundant power supplies.
Packet forwarding rate	8.928 Mpps
MTBF	360,000 hrs
Ethernet	4 x 100/1000 Ethernet ports
Optical port	2*1000Base-X (SFP)
Status LEDs	1 x Power, 2 x SFP, 1 x System
Operating temperature	-40 °C to 75 °C
Housing	Aluminum housing, DIN rail mounting
Dimensions (W x H x D)	40*104*90 mm
Weight	500g (without accessories)

Software

Operating system	Linux, Layer 2 Managed
VLAN	Port VLAN, 802.1Q
VLAN port type	Access/Trunk/Hybrid
Network	Failover (Network backup), VLAN, QoS, Load Balancing
Storm control:	Broadcast, Multicast, DLF
Ring protection	IEEE802.1w RSTP
Management	WEB, SNMP V1/V2c/V3



Hardware

MTU	16K bytes
MAC table	4K
Power	12-36V DC, 44-56V DC (POE type). Dual redundant power supplies.
Packet forwarding rate	14.88 Mpps
MTBF	360,000 hrs
Ethernet	8 x 100/1000 Ethernet ports
Optical port	2*1000Base-X (SFP)
Status LEDs	1 x Power, 2 x SFP, 1 x System
Operating temperature	-40 °C to 75 °C
Housing	Aluminum housing, DIN rail mounting
Dimensions (W x H x D)	49*148*109 mm
Weight	650g (without accessories)

Software

Operating system	Linux, Layer 2 Managed
VLAN	Port VLAN, 802.1Q
VLAN port type	Access/Trunk/Hybrid
Network	Failover (Network backup), VLAN, QoS, Load Balancing
Storm control:	Broadcast, Multicast, DLF
Ring protection	IEEE802.1w RSTP
Management	WEB, SNMP V1/V2c/V3

Model: YHS2110



Specification

WiFi	1200Mbps, Dual Band WIFI6 802.11ac
Mobile	5G NSA/SA operation, Sub-6 GHz, mmWave, 4G LTE, 3G WCDMA
Power	48V ~ 57V, 802.3at PSE
Connections	Up to 60 devices at the same time
Antenna connectors	4 x N-Type 5G Antenna, 2 x N-Type WIFI Antenna
Ethernet	2 x GbE, Support 802.3at Power Supply
WiFi Frequency	2.4GHz Radio: 2.4000GHz ~ 2.4835GHz 5GHz Radio: 5.150~5.250,5.250~5.350,5.470~5.725, 5.725~5.850GHz
Coverage	FIT and FAT AP Mode, Adjustable TX Power, Coverage Radius 150 Meters
Status LEDs	1 x 5G, 1 x Power, 1 x 2.4G WiFi, 1 x 5G WiFi 1 x System
Operating temperature	-40 °C to 75 °C
Housing	Waterproof Outdoor Casing, IP67 Protection
Dimensions (W x H x D)	265 x 195 x 85 mm, Wall or Pole Installation
Weight	1860g (without accessories)

Use case



Model: YHAP9800

Specification

WiFi	1800Mbps, Dual Band WIFI6 802.11ax MU-MIMO
CPU	Qualcomm IPQ6000 + QCA8075 + QCN5022 + QCN5052
Power	48V ~ 57V, 802.3at PSE
Connections	Up to 100 devices at the same time
Antenna connectors	4 x N-Type Antenna
Ethernet	1 x GbE Uplink, Support 802.3at Power Supply
WiFi Frequency	2.4GHz Radio: 2.4000GHz ~ 2.4835GHz 5GHz Radio: 5.150~5.250,5.250~5.350,5.470~5.725, 5.725~5.850GHz
Coverage	FIT and FAT AP Mode, Adjustable TX Power, Coverage Radius 200 Meters
Status LEDs	1 x SFP, 1 x Power, 1 x 2.4G WiFi, 1 x 5G WiFi 1 x System
Operating temperature	-40 °C to 75 °C
Housing	Waterproof Outdoor Casing, IP67 Protection
Dimensions (W x H x D)	265 x 195 x 85 mm, Wall or Pole Installation
Weight	1820g (without accessories)

Use case



Model: YHAP9510

Hardware

Mobile	4G/LTE (Cat 4), 3G, 2G
CPU	Mediatek MIPS 24Kc 580 MHz
Power	5-35 VDC. 4-pin with 3.5 mm terminal block
SIM	2 x External SIM holder (2FF)
Antenna connectors	2 x SMA for mobile, 1 x SMA for WiFi, 1 x SMA for GPS(option)
Ethernet	5 x 10/100 Ethernet ports: 1 x WAN (configurable as LAN), 4 x LAN
Serial	1-RS232, 1-RS485, 6-pin Industrial terminal block
I/O	DI: 2-DI (0-30V Input), DO: 2-Relay (Up to 5A and 30VDC/250VAC output) 3.5 mm female socket with lock
USB	1 x USB 2.0(up to 128G), for User Program, Data Storage and Firmware Upgrade
GPS	Built-in independent GPS Module (option)
WiFi	IEEE 802.11b/g/n, AP and Client modes
Status LEDs	1 x Connection, 3 x Signal strength, 1 x Power, 1 x WiFi, 1 x Alarm, 1 x System
Operating temperature	-40 °C to 75 °C
Housing	Metal housing, DIN rail mounting option
Dimensions (W x H x D)	145 x 112.5 x 44 mm
Weight	790g (without accessories)



Software

Operating system	OpenWrt based Linux OS
Secondary development	Offers C/C++, Python programmable embedded environment for secondary development
Mobile features	Auto APN, Band lock
Protocols	IPv4, IPv6, ICMP, PPPoE, SNMP v1/v2c/v3, TCP, UDP,DHCP, RIPv1/v2, OSPF, BGP, DNS, DDNS, HTTP, ARP, QoS, SNTP, Telnet, SSH
Serial Port	MQTT, Transparent (TCP Client/Server, UDP Client/Server), Modbus Gateway (Modbus RTU to Modbus TCP)
Network	Failover (Network backup), VLAN, QoS, Load Balancing
VPN and tunneling	IPsec/PPTP/L2TP/GRE/OpenVPN
Connection monitoring	Ping Reboot, Periodic Reboot, LCP and ICMP for link inspection
Firewall	ACL/DMZ/Port Mapping/MAC Binding
Management	Web, CLI, SMS, Cloud

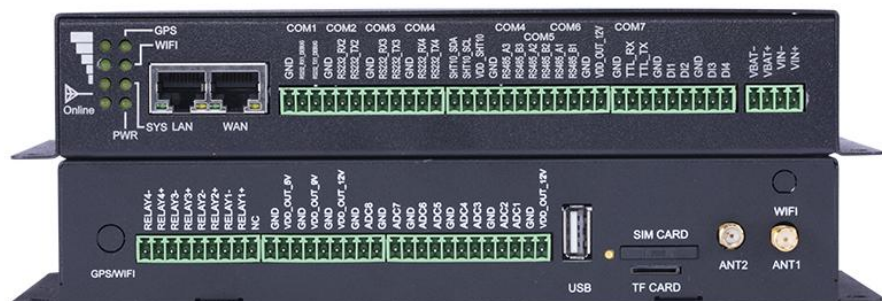
Use case



Model: YHG6500



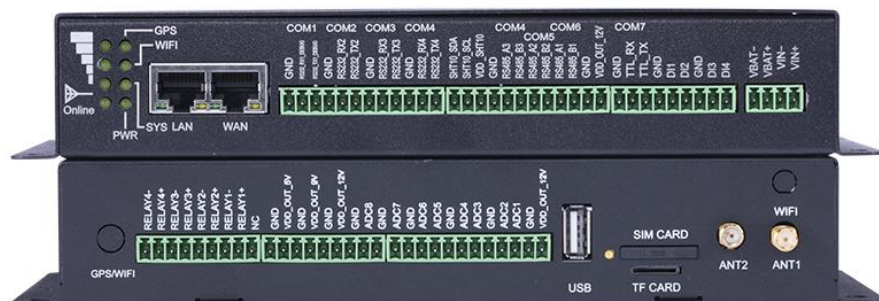
Hardware



Mobile	4G/LTE (Cat 4), 3G, 2G
CPU	32-bit ARM Cortex A7
Power	5-35 VDC. 4-pin with 3.5 mm terminal block
SIM	2 x External SIM holder (2FF)
Antenna connectors	2 x SMA for mobile, 1 x SMA for GPS(option)
Ethernet	2 x 10/100 Ethernet ports: 1 x WAN (configurable as LAN), 1 x LAN
Serial	4-RS232, 3-RS485, 3.5 mm female socket with lock
I/O	<p>DI: 4-DI (0-30V Input),</p> <p>DO: 4-Relay (Up to 5A and 30VDC/250VAC output)</p> <p>Analog Input: 8 x 16-bit ADC, supports 4-20mA current signal input, and 0-5V voltage signal input(Optional)</p> <p>I2C: 1 for temperature, humidity sensors</p> <p>TTL: 1</p> <p>Power Output: 5 (3-channel 12V output, 1- channel 9V output, rated current 1A, 1-channel 5V output, rated current 1A)</p> <p>3.5 mm female socket with lock</p>
USB	1 x USB 2.0(up to 128G), for User Program, Data Storage and Firmware Upgrade
GPS	Built-in independent GPS Module (option)
Status LEDs	1 x Connection, 3 x Signal strength, 1 x Power, 1 x WiFi, 1 x Alarm, 1 x System
Operating temperature	-40 °C to 75 °C
Housing	Metal housing, DIN rail mounting option
Dimensions (W x H x D)	228 x 122x 38 mm
Weight	890g (without accessories)

Software

Operating system	OpenWrt based Linux OS
Secondary development	Offers C/C++, Python programmable embedded environment for secondary development
Mobile features	Auto APN, Band lock
Protocols	IPv4, IPv6, ICMP, PPPoE, SNMP v1/v2c/v3, TCP, UDP,DHCP, RIPv1/v2, OSPF, BGP, DNS, DDNS, HTTP, ARP, QoS, SNTP, Telnet, SSH
Serial Port	MQTT, Transparent (TCP Client/Server, UDP Client/Server), Modbus Gateway (Modbus RTU to Modbus TCP)
Network	Failover (Network backup), VLAN, QoS, Load Balancing
VPN and tunneling	IPsec/PPTP/L2TP/GRE/OpenVPN
Connection monitoring	Ping Reboot, Periodic Reboot, LCP and ICMP for link inspection
Firewall	ACL/DMZ/Port Mapping/MAC Binding
Management	Web, CLI, SMS, Cloud



Use case





Hardware

Mobile	5G SA/NSA, 4G LTE, 3G, 2G
CPU	32-bit ARM 800MHz, Dual cor1
Power	5-35 VDC. 4-pin with 3.5 mm terminal block
SIM	1 x External SIM holder (2FF)
Antenna connectors	4 x SMA for mobile, 2 x SMA for WIFI, GPS(option)
Ethernet	5 x 1000/100 Ethernet ports: 1 x WAN (configurable as LAN), 4 x LAN
Serial	1-RS232, 1-RS485, 3.5 mm female socket with lock
I/O	DI: 2-DI (0-30V Input), DO: 3-Relay (Up to 5A and 30VDC/250VAC output) Analog Input: 3 x 16-bit ADC, supports 4-20mA current signal input, and 0-5V voltage signal input(Optional) Power Output: 2 (12V output, rated current 1A) 3.5 mm female socket with lock
SD	1x Micro SD interface, for User Program, Data Storage and Firmware Upgrade
GPS	Built-in independent GPS Module (option)
Status LEDs	1 x Connection, 3 x Signal strength, 1 x Power, 1 x WiFi, 1 x Alarm, 1 x System
Operating temperature	-40 °C to 75 °C
Housing	Metal housing, DIN rail mounting option
Dimensions (W x H x D)	208 x 125x 48 mm
Weight	990g

Main features

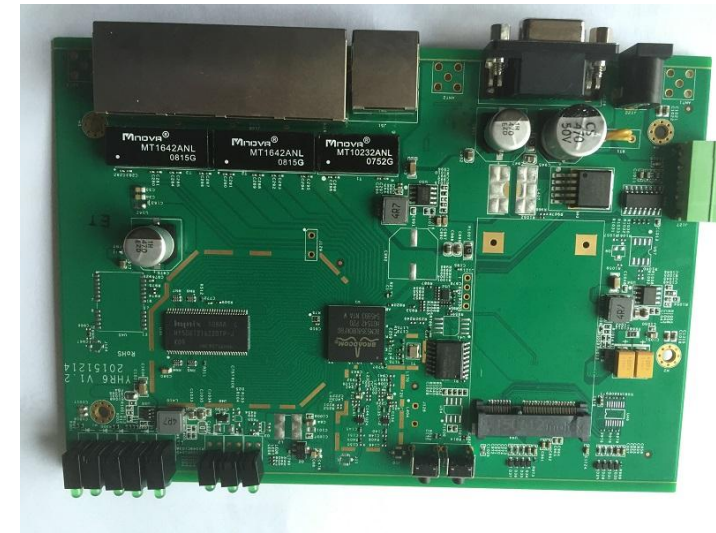
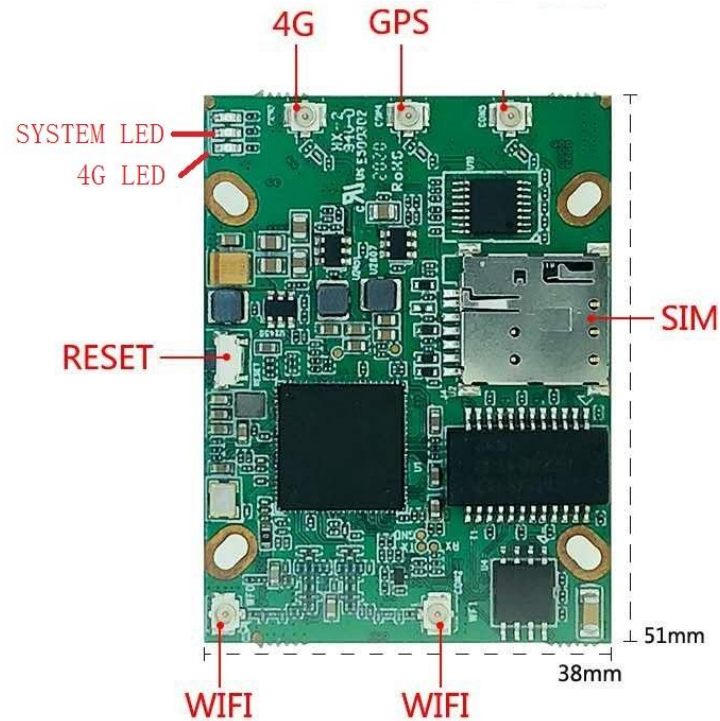
- 1.Super edge computing capability
- 2.Support user secondary development
- 3.Rich interface
- 4.Support Alibaba Cloud, Huawei Cloud, Microsoft, Amazon, Schneider, Siemens and other platforms to access.
- 5.Large memory to support data storage and export, no data loss after power failure, automatic transmission of stored data after the network returns to normal
- 6.Fast speed to support global 5G SA/NSA Sub-6 mode, provide ultra-high data rates and ultra-low latency.

Software

Operating system	OpenWrt based Linux OS
Secondary development	Offers C/C++, Python programmable embedded environment for secondary development
Mobile features	Auto APN, Band lock
Protocols	IPv4, IPv6, ICMP, PPPoE, SNMP v1/v2c/v3, TCP, UDP,DHCP, RIPv1/v2, OSPF, BGP, DNS, DDNS, HTTP, ARP, QoS, SNTP, Telnet, SSH
Serial Port	MQTT, Transparent (TCP Client/Server, UDP Client/Server), Modbus Gateway (Modbus RTU to Modbus TCP)
Network	Failover (Network backup), VLAN, QoS, Load Balancing
VPN and tunneling	IPsec/PPTP/L2TP/GRE/OpenVPN
Connection monitoring	Ping Reboot, Periodic Reboot, LCP and ICMP for link inspection
Firewall	ACL/DMZ/Port Mapping/MAC Binding
Management	Web, CLI, SMS, Cloud

Use case





Our engineers have more than 10 years' experience on IoT communications, so tell us your requirements please, we will customize it for you.



Thank you

To learn more about us, please mail to

service@yinghuaaiot.com

Or visit our website

www.yinghuaaiot.com